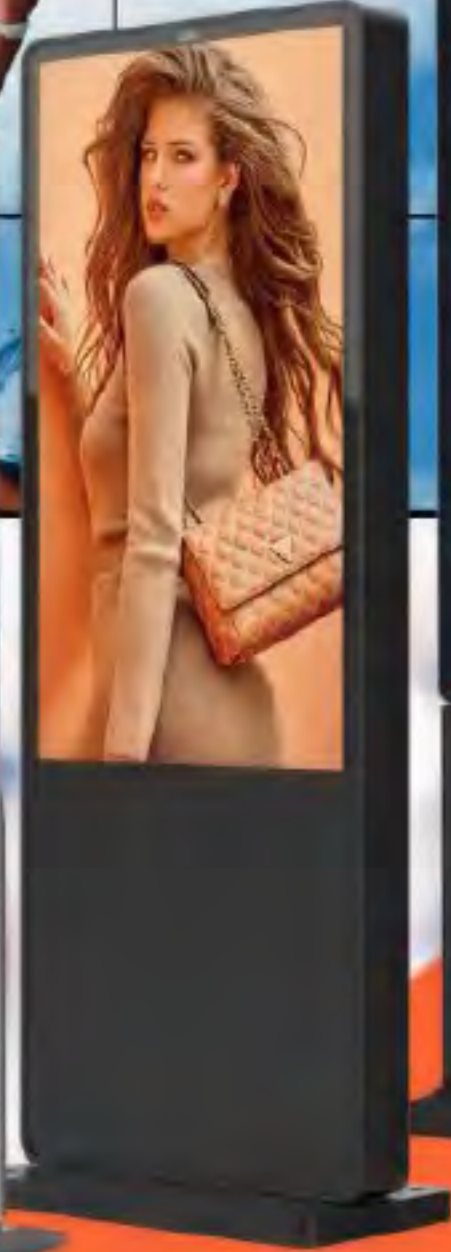


DIGITAL SIGNAGE CATALOGUE

XXXXXXXXXX



2. Digital Singage Solutions

Window Facing Display Solutions



Outdoor Digital Signage Solutions



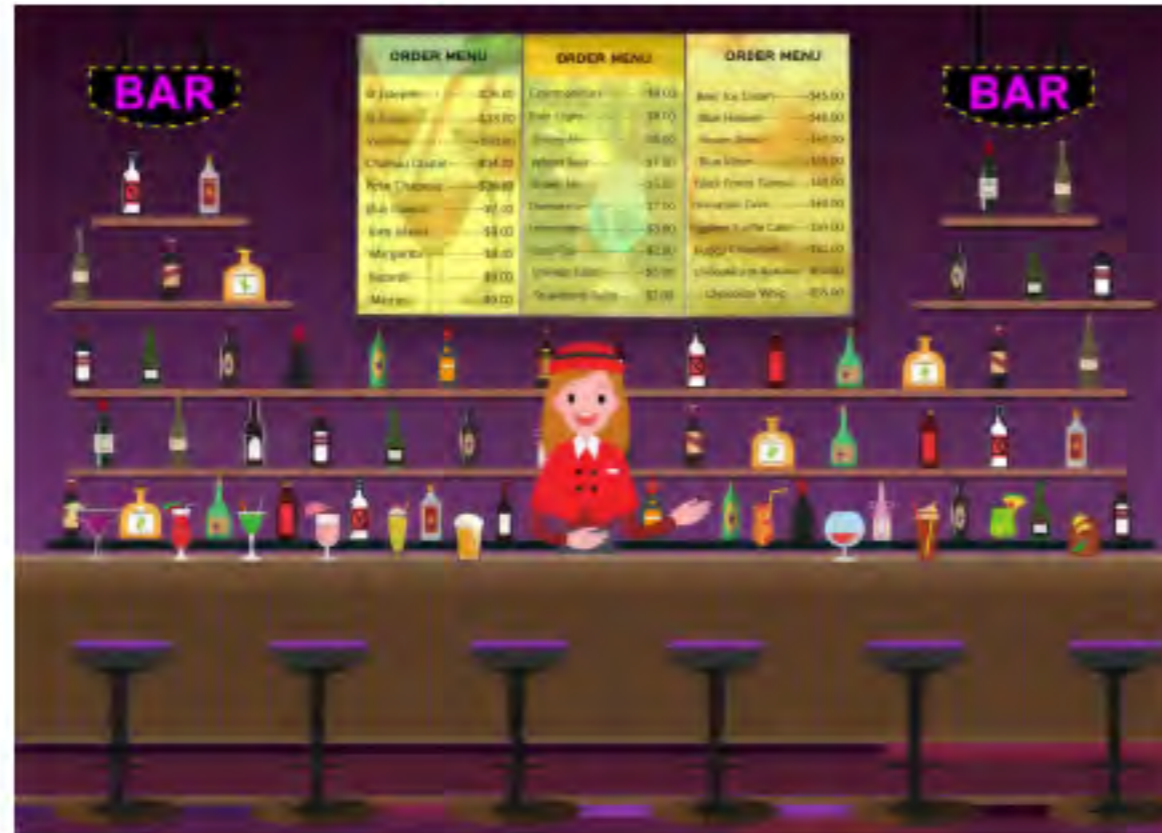
Indoor Digital Signage Solutions



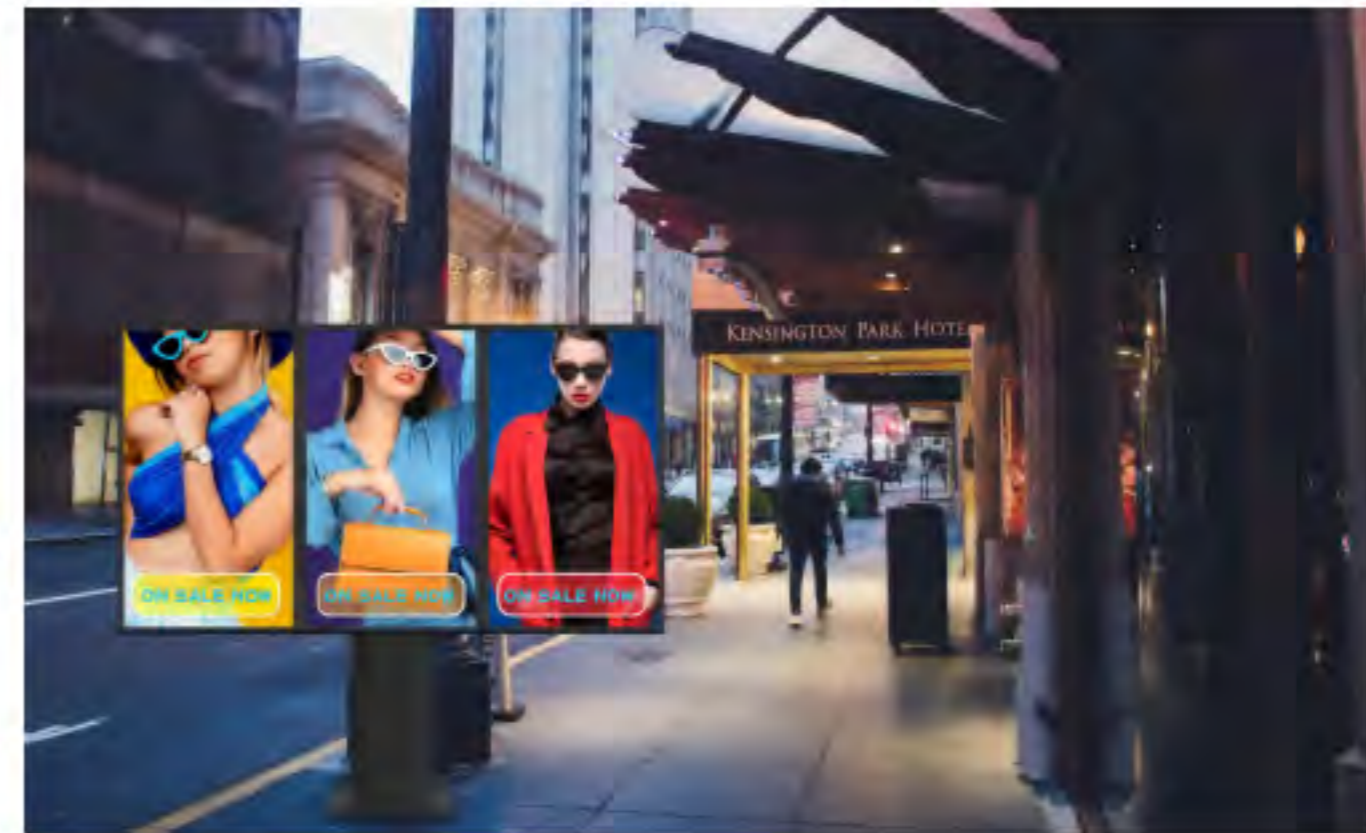
LCD Video Wall Solutions

MAIN PRODUCT RANGES

Digital Menu Boards



Drive Thru Solutions



Shelf Edge Bar Display Solutions

Touch Whiteboard Solutions



2000~3000 nits 4K High Brightness Window Facing Display

Model NO.SD411-WDHB-DS

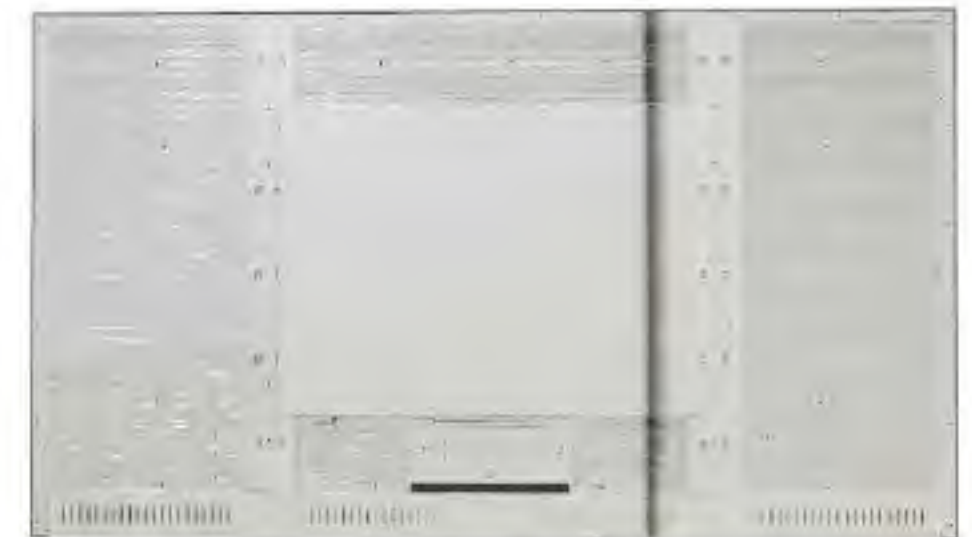
- ✓ Sizes: 32" 43" 49" 55" 65" 75" 86"
- ✓ 8mm Narrow bezel, Slim design body
- ✓ O/S: Android / Windows / Linux, Support Monitor / Plug & Play Standalone version
- ✓ Colors: Black
- ✓ Installation: Wall-mounted / Ceiling / Floor Stand
- ✓ Both LCD commercial panel and industrial panel optional
- ✓ Built-in Fans, conducive to high-temperature heat dissipation
- ✓ High Brightness sensor, the brightness can be adjusted automatically or manually



2500 nits High Brightness Open Frame

Model NO.SD411-OF-DS

- ✓ Sizes: 43" 55" 65" 75"
- ✓ 8mm Narrow bezel, Slim design body
- ✓ O/S: Android / Windows / Linux, Support Monitor / Plug & Play Standalone version
- ✓ Colors: Black + Sliver
- ✓ Installation: Embedded into your enclosure / wall mounted
- ✓ Industrial Standard LCD Display (High temperature resistant panel)
- ✓ High Brightness sensor, the brightness can be adjusted automatically or manually

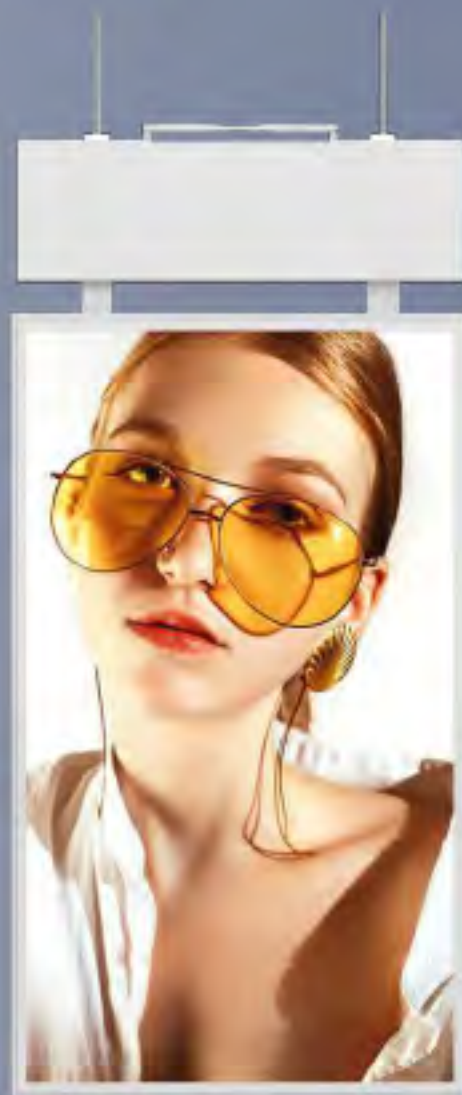


WINDOW FACING DISPLAY

4K 3000&700 Double-sided High Brightness Window Facing Display

Model NO.SD411-D-DS (1st generation)

- ✓ Sizes: 43" 49" 55"
- ✓ O/S: Android / Windows / Linux, Support Monitor / Plug & Play Standalone version
- ✓ 3000&700 nits double-side, support different display contents and the same contents
- ✓ Colors: Black
- ✓ Installation: Hanging / Ceiling
- ✓ Both LCD commercial panel and industrial panel optional
- ✓ High Brightness sensor, the brightness can be adjusted automatically or manually
- ✓ Noise-less and slim-body design
- ✓ Stable design (Fixed on the top with rope, Or both top and bottom use rope fixed)
- ✓ length adjustable



WINDOW FACING DISPLAY

4K 3000&700 Double-sided High Brightness Window Facing Display

Model NO.SD411-D-DS (2nd generation)

- ✓ Sizes: 43" 49" 55"
- ✓ O/S: Android / Windows / Linux, Support Monitor / Plug & Play Standalone version
- ✓ 3000&700 nits double-side, support different display contents and the same contents
- ✓ Colors: Black
- ✓ Installation: Hanging / Ceiling
- ✓ Both LCD commercial panel and industrial panel for your optional
- ✓ High Brightness sensor, the brightness can be adjusted automatically or manually
- ✓ Noise-less and slim-body design
- ✓ Stable design
- ✓ length adjustable

***Warm tip: Due to the exclusive agency rights signed with the customer, the sale of this style is temporarily suspended and will be restored after 18 months



WINDOW FACING DISPLAY

4K 3000&700 Double-sided High Brightness Window Facing Display

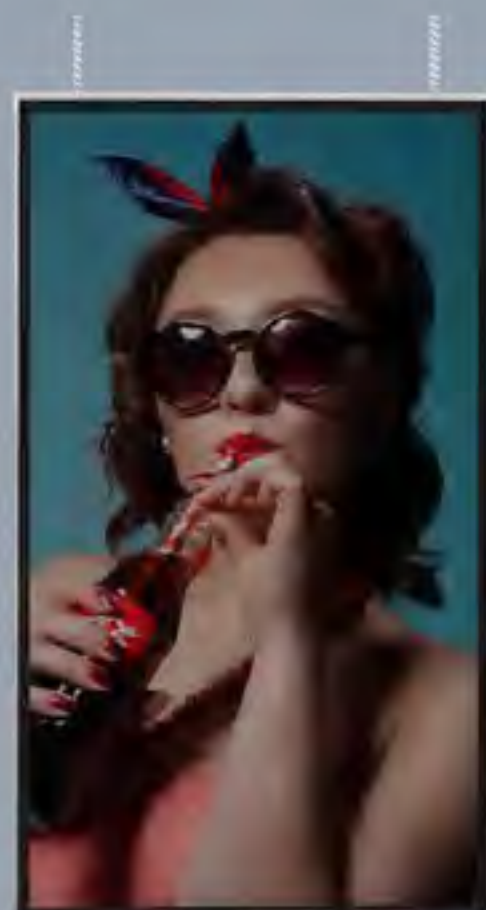
Model NO.SD411-D-DS (3rd generation)

- ✓ Sizes: 43" 49" 55"
- ✓ O/S: Android / Windows / Linux, Support Monitor / Plug & Play Standalone version
- ✓ 3000&700 nits double-side, support different display contents and the same contents
- ✓ Colors: Black
- ✓ Installation: Hanging / Ceiling
- ✓ Both LCD commercial panel and industrial panel optional
- ✓ High Brightness sensor, the brightness can be adjusted automatically or manually
- ✓ Noise-less and slim-body design
- ✓ Stable design (Fixed on the top with rope, Or both top and bottom use rope fixed)
- ✓ length adjustable



☀ 3000nits

Window facing side



☾ 700nits

Inside facing side



WINDOW FACING DISPLAY

4K 3000&700 Double-sided High Brightness Window Facing Kiosk

Model NO.SD411-DFS-DS

- ✓ Sizes: 43" 49" 55"
- ✓ O/S: Android / Windows / Linux, Support Monitor / Plug & Play Standalone version
- ✓ 3000&700 nits double-side, support different display contents and the same contents
- ✓ Colors: Black
- ✓ Installation: Floor stand
- ✓ Both LCD commercial panel and industrial panel for your optional
- ✓ High Brightness sensor, the brightness can be adjusted automatically or manually
- ✓ Noise-less and slim-body design
- ✓ Stable design (Fixed on the floor or with wheels)



WINDOW FACING DISPLAY

15.6" Digital Rob Display

Model NO.SD411-DRD-DS

- ✓ Sizes: 15.6"
- ✓ O/S: Android
- ✓ Brightness: 500 nits
- ✓ Resoluton: FHD 1920x1080
- ✓ Power supply: 12V2A-12.5A for different versions and screens per set
- ✓ Housing colors: black, white; Other colors optional
- ✓ Speaker: optional 2W/3W
- ✓ Hanging Method: support 1pcs/2pcs/3pcs/4pcs per set, max support hanging 4pcs



IP66 Outdoor Waterproof Smart Display

Model NO.SD308S-DS (Super-slim design with high brightness)

Thickness: 98mm

Sizes: 32" 43" 49" 55"

Fans cooling system Or Fanless version (Aluminum heat dissipation)

Brightness: 2000~2500nits

O/S: Android / Windows / Linux. Monitor / Plug & play (Standalone)

Colors: Silver frame + Black body, Full Black

Installation: Wall-mounted / Ceiling / Floor stnading



OUTDOOR DIGITAL SIGNAGE

IP66 Outdoor Drive Thru Digital Menu Boards

Model NO.SD309-ODT-DS

Sizes: 32" 43" 49" 55"

Fans cooling system or fanless version

High temperature resistance industrial glass

Brightness: 2000-2500nits

O/S: Android / Windows / Linux. Monitor / Plug & play (Standalone)

Colors: Black

Install method, 1pc 1*2pcs 1*3 pcs



IP65 Outdoor Drive Thru Digital Menu Boards

Model NO.SD309-ODT-DS

Sizes: 32" 43" 49" 55" 65" 75"

Fans cooling system

Brightness: 2000~2500nits

O/S: Android / Windows / Linux. Monitor / Plug & play (Standalone)

Colors: Black

Install method, 1pc 1*2pcs 1*3 pcs



IP65 43" Outdoor Battery Digital Poster

Model NO.SD306-DBD-DS

Sizes: 43"

Fans cooling

Brightness: 1500nits

O/S: Android, plug & play

Colors: Black / White

14 hours battery life



IP55 or IP65 Outdoor Waterproof Wall-mounted Display

Model NO.SD308-OVD-DS (Rounded corner standard design)

Sizes: 21.5" 32" 43" 49" 55" 65" 75" 86"

Fans cooling or AC cooling system

Brightness: 1500nits ~2500 nits

O/S: Android / Windows/Linux. No O/S: Monitor / Plug & play (Standalone)

Touch: Capacitive touch / PCAP foil touch(Nano touch) / IR touch

Colors: Silver/ Black / White / color options, other colors can be customized

Installation: Wall-mounted / Ceiling



IP65 Outdoor Waterproof Wall-mounted Display

Model NO.SD308L-OWD-DS

Sizes: 21.5" 32" 43" 49" 55" 65"

Fans cooling or AC cooling system

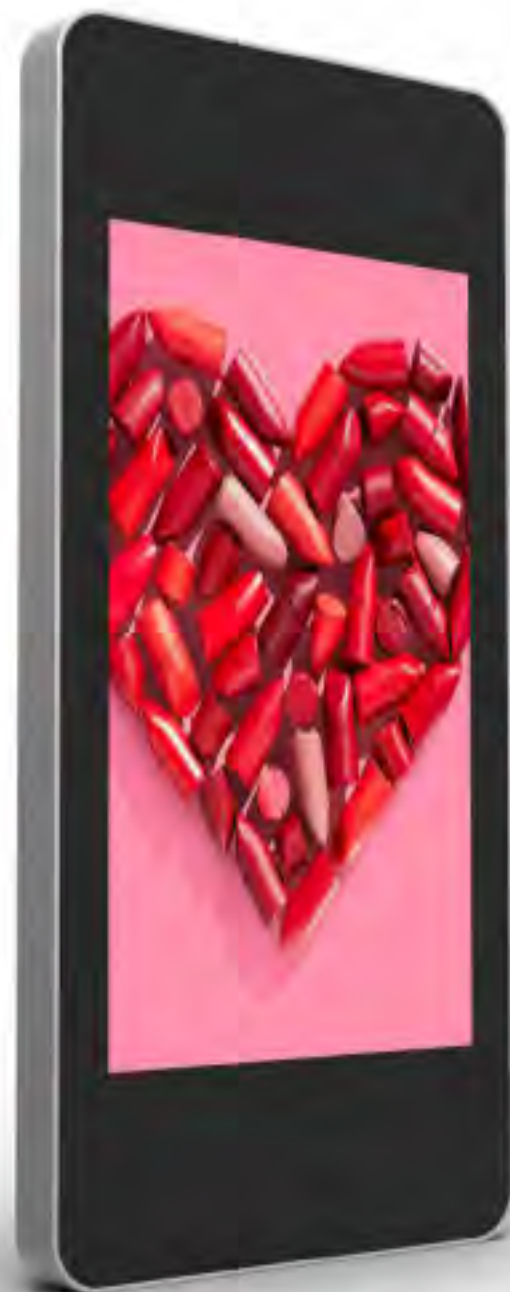
Brightness: 1500nits ~2500 nits

O/S: Android / Windows/Linux. No O/S: Monitor / Plug & play (Standalone)

Touch: Capacitive touch / PCAP foil touch(Nano touch) / IR touch

Colors: Silver + Black color options, other colors can be customized

Installation: Wall-mounted / Ceiling



IP65 Outdoor Waterproof Wall-mounted Display

Model NO. SD308-OWDS-DS (Square corner and slim design)

Sizes: 43" 55"

Fans cooling or AC cooling system

Brightness: 2000nits

O/S: Android / Windows/Linux. No O/S: Monitor / Plug & play (Standalone)

Touch: Capacitive touch / PCAP foil touch(Nano touch) / IR touch

Colors: Black, other colors can be customized

Installation: Wall-mounted / Ceiling



Semi-outdoor Embedded Touch Monitor

Model NO.SD308-OWDE-DS

Sizes: 21.5" 27" 32" Fans cooling

Brightness: 1500nits

Monitor (HDMI Input)

Touch: Capacitive touch / PCAP foil touch(Nano touch) / IR touch

Colors: Silver/ Black / color options, other colors can be customized

Installation: Embedded



IP65 Outdoor Waterproof Floor Standing Kiosk/Totems

Model NO.SD309-OFSSS-DS (Super-slim Design, the thickness is 120mm only)

Sizes: 43" 55"

Fans cooling

Brightness: 2000 ~ 2500 nits

O/S: Android / Windows

Touch: Capacitive touch / PCAP foil touch(Nano touch) / IR touch

Colors: Black color, other colors need customized

Installation: Floor Standing



IP65 Outdoor Waterproof Floor Standing Kiosk/Totems

Model NO.SD309-OFS-DS (Standard design)

Sizes: 32" 43" 49" 55" 65" 75" 86" (Single side or Double-sided)

Fans cooling or AC cooling system

Brightness: 1500 nits ~2500 nits

O/S: Android / Windows/Linux. No O/S: Monitor / Plug & play (Standalone)

Touch: Capacitive touch / PCAP foil touch(Nano touch) / IR touch

Colors: Silver/ Black / White options, other colors can be customized

Installation: Floor Standing



IP65 Outdoor Waterproof Floor Standing Kiosk/Totems

Model NO.SD309-OFSH-DS

Sizes: 43" 55"

Fans cooling or AC cooling system

Brightness: 1500 nits ~ 2500 nits

O/S: Android / Windows/Linux. No O/S: Monitor / Plug & play (Standalone)

Touch: Capacitive touch / PCAP foil touch(Nano touch) / IR touch

Colors: Black, other colors can be customized

Installation: Floor Standing



IP65 Outdoor Waterproof Floor Standing Kiosk/Totems

Model NO.SD309B-OFS-DS

Sizes: 43" 49" 55" 65"

Fans cooling or AC cooling system

Brightness: 2500 nits

O/S: Android / Windows/Linux. No O/S: Monitor / Plug & play (Standalone)

Touch: Capacitive touch / PCAP foil touch(Nano touch) / IR touch

Colors: Silver/ Black / options, other colors can be customized

Installation: Floor Standing



IP65 Outdoor Waterproof Floor Standing Kiosk/Totems

Model NO.SD309S-OFS-DS

Sizes: 43" 49" 55" 65"

Fans cooling or AC cooling system

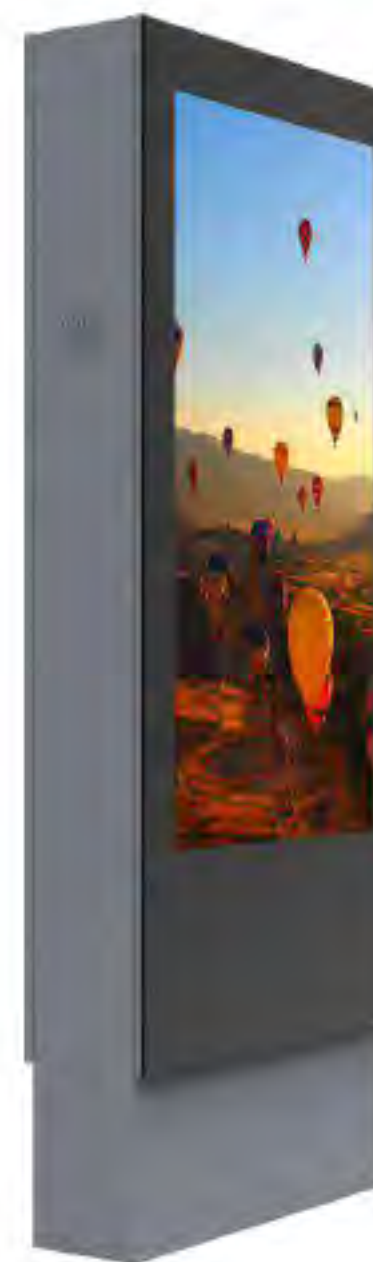
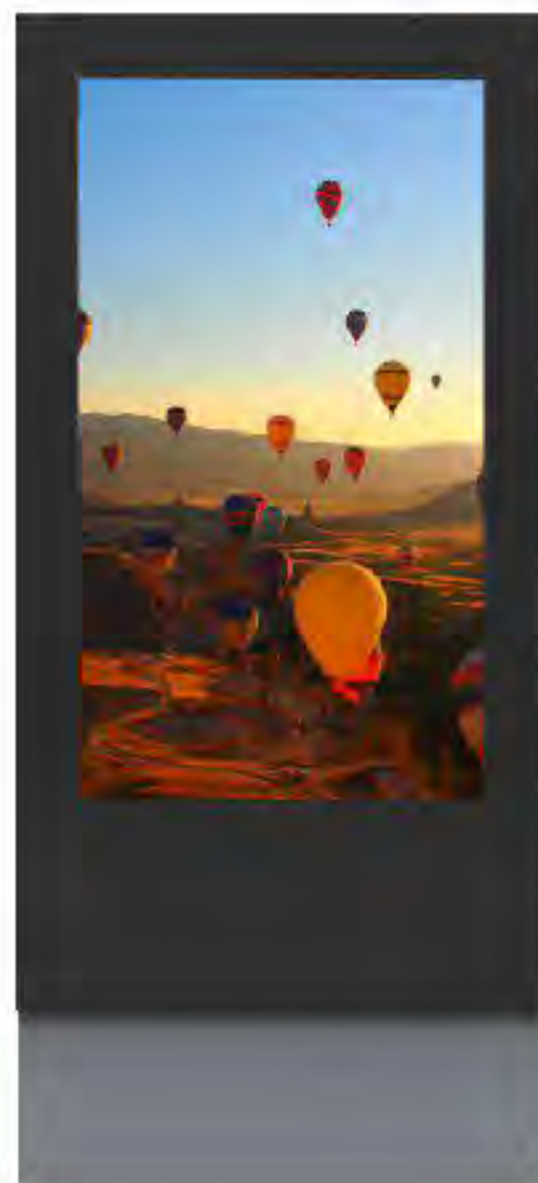
Brightness: 2500 nits

O/S: Android / Windows/Linux. No O/S: Monitor / Plug & play (Standalone)

Touch: Capacitive touch / PCAP foil touch(Nano touch) / IR touch

Colors: Silver/ Black / options, other colors can be customized

Installation: Floor Standing



IP65 Outdoor Waterproof Telephone Booth Floor Standing Kiosk/Totems

NO.SD310-OFSTB-DS (Double-sided Or Single-sided)

Sizes: 55" 65" 75"

Fans cooling or AC cooling system

Brightness: 2000~2500 nits

O/S: Android / Windows/Linux. No O/S: Monitor / Plug & play

Touch: Capacitive touch / PCAP foil touch(Nano touch) / IR touch

Colors: Black + Silver options, other colors can be customized

Installation: Floor Standing



LCD Video Wall / Digital Wall Display

Model NO.SD-DWD

Sizes: 46" 49" 55" 65"

Bezel: 8mm/5.5mm/3.5mm/1.8mm/0.88mm

Brand: Samsung/LG/BOE

1920*1080 Resolution

Colors: Black

Brightness: 500nits Or 700 nits



Wall-mounted or embedded installation



Free standing bracket installation



Cabinet installation

DIGITAL MENU BOARDS



Digital Menu Board

Digital Menu Boards

Model NO.SD410-DMB-DS

Sizes: 32" 43" 49" 55" 65"

Bezel: 8mm

4k resolution

QLED technology

O/S: Android, support Monitor, Plug & play

Colors: Black



Indoor Smart Self-service Payment Kiosk

Model NO.SD109-SS0M-DS

Sizes: 21.5" 32"

O/S: Android / Windows / Linux, Support Monitor version

Touch: Capacitive touch

Colors: Black / White / color options, other colors can be customized

Function Customized: NFC, 80mm printer, POS terminal, Dual-Camera, QR code/Bar Code, etc



Indoor Education/Conference Smart Touch Whiteboard

Model NO.SD108-TWB-DS

Sizes: 55" 65" 75" 86" 98" 100"

O/S: Android / Windows, Support Dual O/S, both Android and Windows.

Touch: IR touch, 20 touch point

Colors: Silver/ Black / White / color options, other colors can be customized



Meeting room



Education



Whiteboard with videoconferencing Equipments



Business / Training center

INDOOR DIGITAL SIGNAGE

Shelf Edge Ultra-wide Strtched Bar LCD Display And Strtched Bar LCD Display

Model NO.SD510-USBD0-DS & Model NO.SD510-USBD-DS

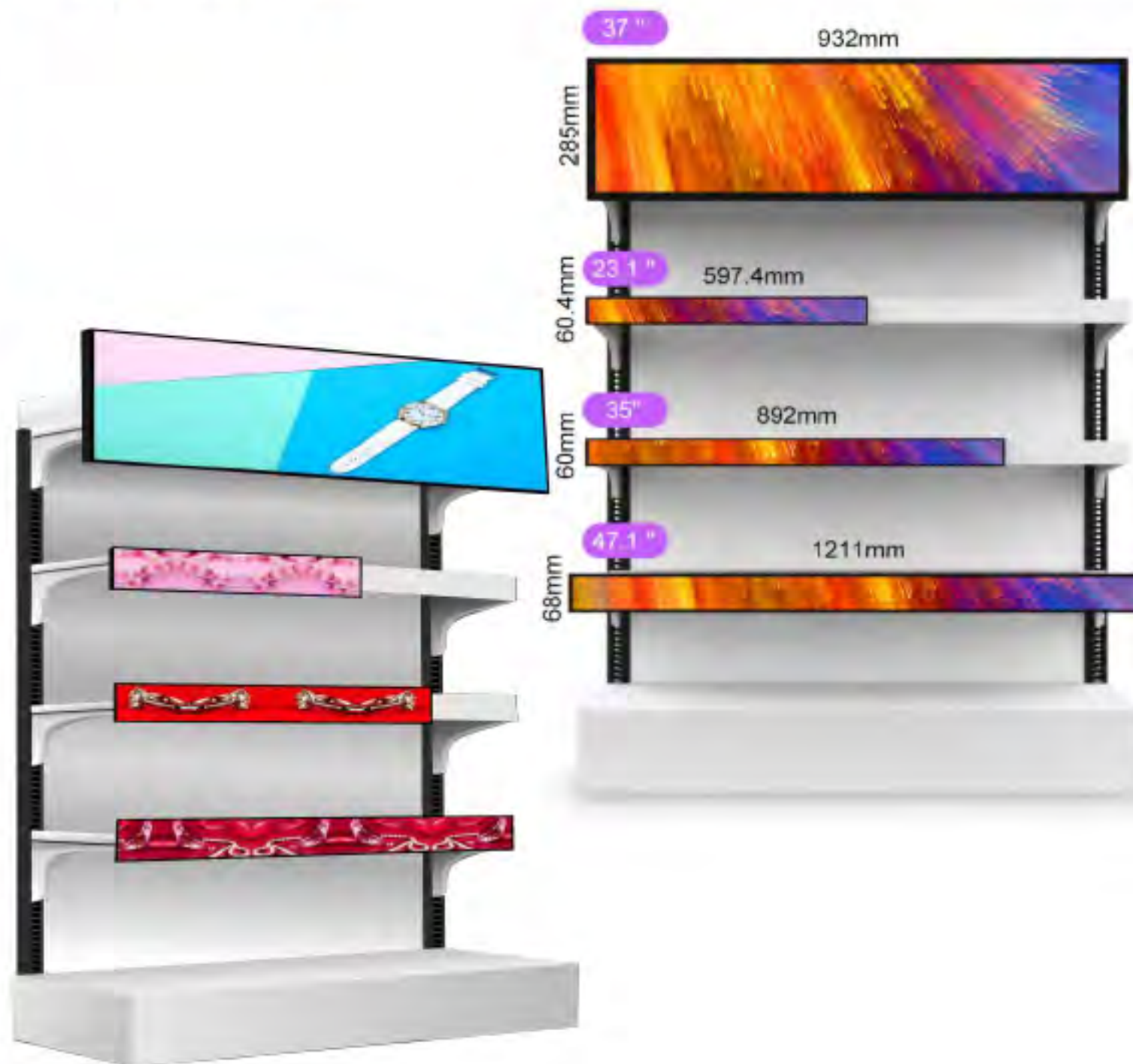
Sizes: 23.1" 35.1" 37" 47.1"

12"-88"

O/S: Android.

Colors: Black

Brightness: 500 nits



INDOOR DIGITAL SIGNAGE

Indoor Wall-mounted Digital Signage

Model NO.SD208-WM-DS

Sizes: 10.1" 15.6" 18.5" 21.5" 32" 43" 49" 55" 65" 75" 86" 98" 100"

O/S: Android / Windows / Linux, Support Monitor / Plug & Play version (Standalone)

Touch: Capacitive touch / PCAP foil touch(Nano touch) / IR touch

Default Color: Silver frame + Black body. Black / White color options, other colors can be customized



Indoor Floor Standing Kiosk/Totems

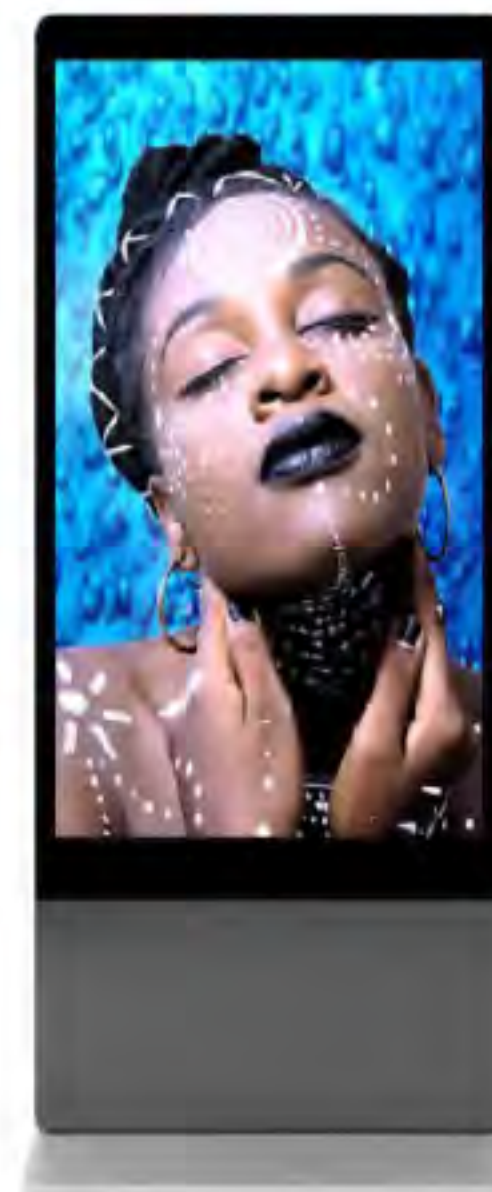
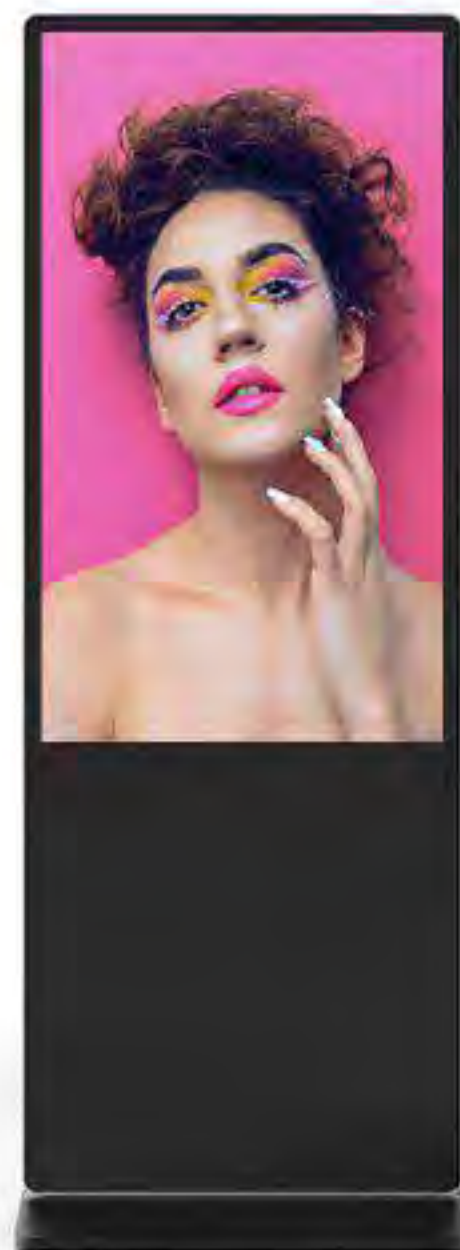
Model NO.SD209-FS-DS

Sizes: 32" 43" 49" 55" 65" 75" 86" 98"

O/S: Android / Windows / Linux, Support Monitor / Plug & Play version (Standalone)

Touch: Capacitive touch / PCAP foil touch(Nano touch) / IR touch

Default Color: Silver frame + Black body. Black / White color options, other colors can be customized



Indoor Double-sided Floor Standing Kiosk/Totems

Model NO.SD210-TK-DS (K & S design)

Sizes: 21.5" 32" 43" 49" 55" 65"

O/S: Android / Windows / Linux, Support Monitor / Plug & Play version (Standalone)

Touch: Capacitive touch / PCAP foil touch(Nano touch) / IR touch

Colors: Silver/ Black / White / color options, other colors can be customized



Indoor Double-sided Floor Standing Kiosk/Totems

Model NO.SD209-D-DS

Sizes: 43" 49" 55" 65"

O/S: Android / Windows / Linux, Support Monitor / Plug & Play version (Standalone)

Touch: Capacitive touch / PCAP foil touch(Nano touch) / IR touch

Default Color: Black / White color options, other colors can be customized



Indoor Elevator Display

Model NO.SD211-ED-DS

Sizes: 18.5" 21.5" 32"

Slim Design

O/S: Android, Support Monitor / Plug & Play version (Standalone)

Colors: Silver/ White / Black, other colors can be customized



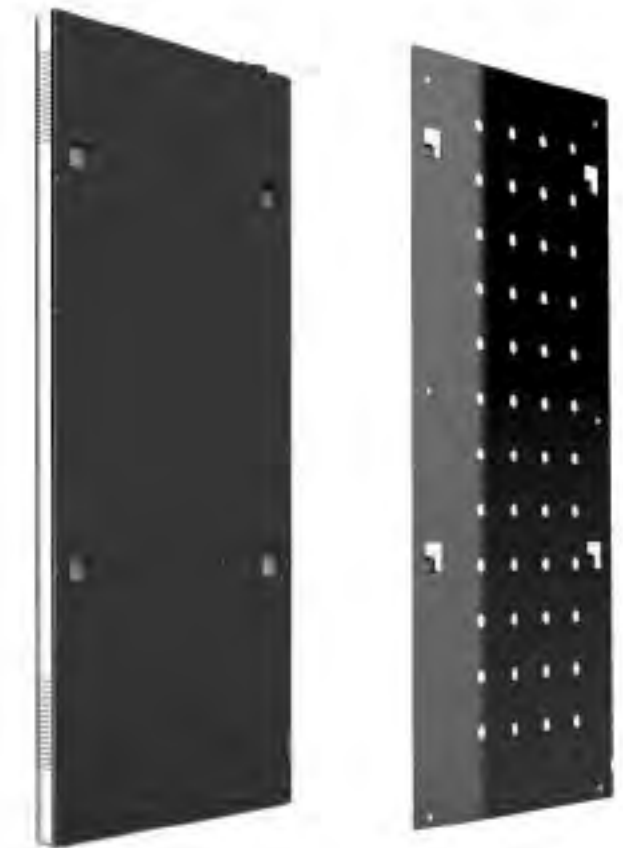
21.5" or 32"



Dual-screen 18.5"+10.1"
Or 21.5" + 10.1"



18.5" Or 21.5"



Fitness Mirror Digital Display

Model NO.SD608-FM-DS

Sizes: 43"

O/S: Android / Windows / Linux, Support Monitor / Plug & Play version (Standalone)

Touch: Capacitive touch / PCAP foil touch(Nano touch) / IR touch

Colors: Silver/ White/ Black, other colors can be customized



Indoor Digital Poster Display

Model NO.SD409-DDP-DS

Sizes: 32" 43" 49" 55"

O/S: Android / Windows / Linux, Support Monitor / Plug & Play version (Standalone)

Touch: Capacitive touch / PCAP foil touch(Nano touch) / IR touch

Colors: Silver/ White/ Black, other colors can be customized



Indoor Digital Poster Display

Model NO.SD409-DDF-DS

Sizes: 32" 43" 49" 55"

O/S: Android / Windows / Linux, Support Monitor / Plug & Play version (Standalone)

Touch: Capacitive touch / PCAP foil touch(Nano touch) / IR touch

Colors: Silver/ White/ Black, other colors can be customized



INDOOR DIGITAL SIGNAGE

400&800 nits Indoor Double-sided High Brightness Display

Model NO.SD311-WFDHB-DS

Sizes: 43" 49" 55"

O/S: Android / Windows / Linux, Support Monitor / Plug & Play version

Colors: White, Siver/ Silver. other colors can be customized



Indoor R1500 & R1800 Curved Touch Monitor

Model NO.SD408-CTM-DS

Sizes: 32" 43"

O/S: Touch Monitor

Touch: Capacitive touch / PCAP foil touch(Nano touch)

Colors: Silver + Black body, other colors can be customized



Indoor Rotatable Information Kiosk

Model NO.SD312-RK-DS

Sizes: 43" 49" 55"

O/S: Android / Windows / Linux, Support Monitor / Plug & Play version

Touch: Capacitive touch / PCAP foil touch(Nano touch) / IR touch

Colors: Silver/ White /Black, other colors can be customized



Indoor Embedded Touch Monitor

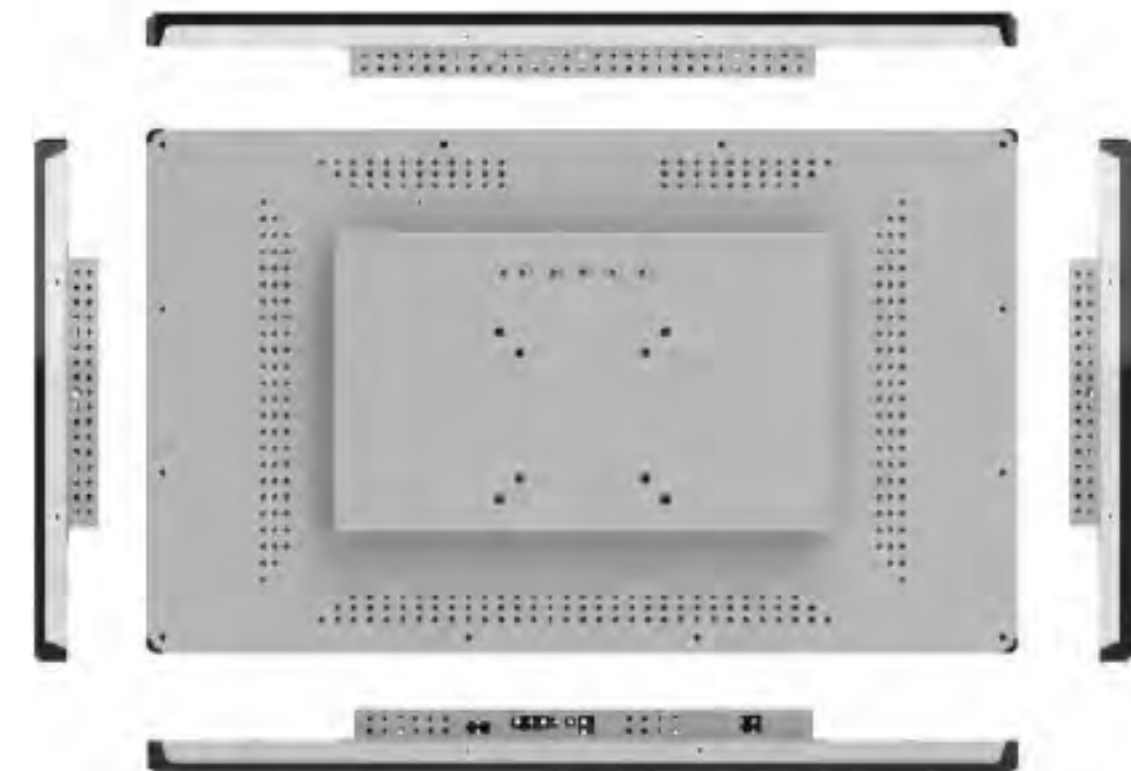
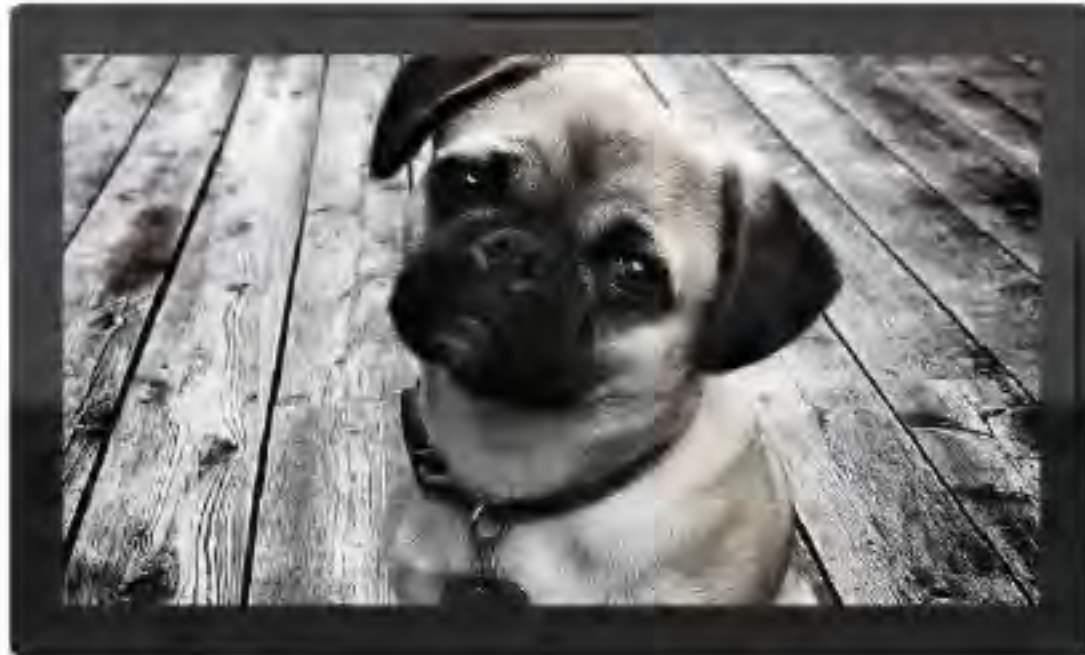
Model NO.SD508-DMB-DS

Sizes: 10.1"-98"

O/S: Touch Monitor / Touch Android

Colors: Black

Installation: Embedded



INDOOR DIGITAL SIGNAGE

8" EU/USA Health Code Face Recognition Body Temperature Testing Android Display

Model NO.SD509-FRBT-DS

Sizes: 8"

O/S: Android with software

Colors: Silver + Black



21.5" Hand Sanitizer Dispenser Display

Model NO.SD-HSD-DS

Sizes: 21.5"

O/S: Android, support capacitive touch, with temperature measurement

3L Bottle

Color: White



Smart All-in-one Touch Table / Desk

NO.SD511-TTD-DS

Sizes: 21.5" 32" 43" 49" 55" 65"

O/S: Android / Windows / Linux, Support Monitor / Plug & Play version

Touch: Waterproof touch function

No O/S: Monitor/ Plug & Play version

Colors: Black/ White, other colors can be customized



3. Industries And Marketing

Retail & Street Stores



Digital signage and retail are complementary. Visual communication is an amazing asset for your business. As a retailer, you are always seeking ways in which you can engage with your existing and potential customers with the objective of them being loyal and regularly buyers.

Your shop window is the first opportunity that you have to engage a potential shopper and entice them into your store, in-window digital signage provides the perfect platform for you to engage their interest in the latest offers, a new clothing collection or allow them to take control of the display and view your products when your store is closed.

Recommended Products:

1. SD510-USBD0-DS & SD510-USBD-DS Bar LCD Display & Shelf Edge Display
2. SD411 SD411-D Window Facing Display series
3. SD208 Wall mounted Display
4. SD209 Floor stand kiosk
5. SD109 Payment kiosk
6. SD409 A board design digital poster
7. SDHSD Hand sanitizer dispenser
8. SD509 Temperature testing pass device

Benefits

The Excellent Retail Experience

1. Attract potential consumers with eye-catching and immersive enjoyment content
2. Retail stores with interactive display and information kiosks can help consumers check information
3. Inform consumers of the new products with display videos and pictures
4. Built-in the web camera display can analyze consumer preferences, so that can change stores style or others
5. Better display of promotional activities
6. Attract and influence consumers to consume
7. Turn potential consumers into consumers

Promote branding

1. Establish and promote brands through various marketing content such as videos and pictures
2. According to the needs of advertisers or brand owners, set up a list of play ads
3. Advertising information can be played according to the target location

Save cost

1. Reduce printing posters, leaflets, and labor costs
2. It is more convincing to replace posters or leaflets with dynamic and eye-catching content

Outdoor/ DooH & Automotive



The initial investment towards outdoor digital signage can sometimes be a bit nerve-wracking, but it will save you labor costs down the line and can generate unparalleled reach & engagement!

In short, the benefits outweigh any negatives or challenges you may have. Whether it's cost-saving, time-efficiency, or even how easy it is to manage your information, digital signage and outdoor digital billboards are the way of the future.

Why outdoor? Targeted digital marketing campaigns with bold offline creativity. Attract your audience by launching dynamic and flexible digital outdoor events in global urban centers.

Benefits

Extend Your Coverage-When your audience is far away from gadgets, attract them with compelling content.

Improved Results - Increase your multi-channel products through media related to the web and mobile devices.

High Efficiency-Utilize demographic data and data triggers to bid when and where it matters most.

Highest Reach Volume - A benefit of outdoor digital signage is that it reaches 70% of the public

Multiple Messages - A potential customer driving to work may see one ad, and on the way back see a completely different one.

Better Engagement - Study conducted in Sweden, showed that drivers spend a lot more time looking at an outdoor digital display than a static billboard

Easy Management - Electronic message centers allow you to change your advertisement on the fly, which means for a timely communication with customers.

It Pays For Itself - The Small Business Administration (SBA) states that signs are the most effective, yet least expensive form of advertisement. This means that the ROI (return of investment) is much higher.

Recommended Products:

Outdoor series
SD308 SD308S SD309 SD3090DT SD310



Digital signage display in the 4s store showroom can help enhancing the car buying experience, to modernize the automotive business, digital signage plays exciting videos and clear images in the exhibition hall to bring customers into the car brand, while providing influential and precise marketing interactions, using digital signage to attract and authorize customers to browse new car features, options, Colors and promotions, turn potential customers into buyers

Benefits

Digital signs in the 4s store showroom promote sales and increase sales.

Promote effective interaction to better understand the needs of buyers

Establish and promote brands through various marketing content such as videos and pictures

Reduce perceived wait times in waiting areas

Attract and influence consumers to consume

Reduce printing posters, leaflets, and labor costs

Recommended Products:

- | | |
|-----------------|---------------------------------|
| 1. SD-DWD | LCD VIDEO WALL |
| 2. SD210-TK-DS | Interactive information kiosk |
| 3. SD209-FS-DS | Floor Stand Kiosk |
| 4. SD410-DMB-DS | Digital menu boards |
| 5. SD-HSD | Hand sanitizer dispenser |
| 6. SD509 | Temperature testing pass device |

Hospitality & Government



The reception area of any hotel is often its centrepiece, and also where the customer experience starts so make it stand out with stunning video wall arrays and appealing content which will set the tone and expectation of a worthy establishment whether for a conference or a holiday. Room rates fluctuate depending on the time of day or year, or the demand due to a conference. Increased competition and special promotions are not easily catered for through traditional printed signage. In 24 hour receptions when the concierge is not on duty a kiosk can be used to provide information to travellers on the go. Avoid having long queues for those frequently asked questions and add to the customer journey. Kiosks can also take the form of self check in areas for those business travellers who may wish to bypass reception and possible long lines.

Benefits

1. Video wall large screen displays the environmental facilities and sanitation measures of hotels or reception places,
2. Elevator advertising content can help marketing and strengthen the brand
3. Promote local customs and entertainment venues and maintain the communication of entertainment information
4. The interactive kiosk can replace manual query information and obtain location services.
5. Display the latest flight information, weather forecast, and other convenient services for customers
6. Promote branding
7. Save cost

Recommended Products:

1. SD208 Wall mounted Display
2. SD209 Floor stand kiosk
3. SD211 Elevator Display
4. SD-DWD LCD video wall
5. SD-HSD Hand sanitizer dispenser
6. SD509 Temperature testing pass device



Government digital signage enables agencies and organizations at the administrative, state, and local levels to more effectively notify citizens and involve employees. Digital signage and video wall displays allow government offices to display automated content, such as event lists, courts, news, etc. This will keep the screen fresh and public participation. Display the latest announcements through digital signage to keep the community informed of the latest situation. Communications from government organizations or agencies regularly convey more and more importance, from crisis and public welfare updates to providing important services and information to the community. By displaying digital signage for government foundations (including capital structures, prisons, and municipal workplaces), internal and external communications can be upgraded. Digital signage can be used in many ways in government organizations.

Benefits

1. Communicate and update current projects and plans to the public
2. Increase participation by informing citizens of upcoming events
3. Display local/regional news headlines, weather, and live TV to reduce perceived waiting time
4. Use the interactive guide station to guide citizens to browse your facilities conveniently
5. Static communications that reduce printing and logistics costs may never be read
6. Save cost

Recommended Products:

- | | |
|----------------|---------------------------------|
| 1. SD-DWD | LCD VIDEO WALL |
| 2. SD208-WM-DS | Wall-mounted Display |
| 3. SD209-FS-DS | Floor stand kiosk |
| 4. SD308/SD309 | Outdoor digital signage |
| 5. SDHSD | Hand sanitizer dispenser |
| 6. SD509 | Temperature testing pass device |

Food & beverages & Healthcare



Digital signage is quickly becoming the standard for displaying food, whether in restaurants or the food and beverage market. Improve your customer experience by transforming traditional menus and signs into visually appealing dynamic digital signage. Our digital signage products can help You build a smart restaurant to expand digital information by adding displays in the dining area to entertain and increase brand loyalty. Combine the high-brightness window display to attract customers from outside your location.

Benefits

Increase customers

1. Attract customers with rich dynamic content and reduce the loss of customers due to waiting
2. Payment kiosk makes quick payments, reduces waiting, and increases sales.
3. Demonstrate knowledge of balanced nutrition methods and food health and safety

Convert more potential customers

1. Display colorful, appetizing menus and special dishes
2. By playing a dynamic video to show the characteristics of the food, grasp the preferences of customers.
3. Display daily promotion and discount information
4. Window display to attract potential customers

Easier

1. Menu information and price information can be updated at any time
2. Can switch more items back and forth
3. Quickly remove sold out items
4. Save cost

Recommended Products:

- | | |
|--------------|---------------------------------------|
| 1. SD410 | Digital menu Boards |
| 2. SD109 | Payment kiosk |
| 3. SD411 | High Brightness window facing display |
| 4. SD309-ODT | Outdoor drive thru display |
| 4. SD-DWD | LCD video wall |
| 5 SD-510 | Shelf Edge Display |



We can see digital signage everywhere in Healthcare, such as waiting areas, corridors, and public areas, doctor's offices, etc., which can make it easier for people to obtain relevant real-time information, such as health tips, wayfinding, payment kiosk, and other facility information.

Benefits

Healthcare easier with Digital signage,

1. Digital signage is a device that effectively helps convey important information
2. Doctors and employees can explain and analyze with people by zooming in to make it easier for people to understand
3. Digital signage can provide visitors with a Wayfinding checking service
4. Payment kiosk can make payments quickly, reducing long-term gatherings of personnel
5. Health video advertisements in the waiting area can let visitors learn more about health
6. knowledge and reduce visitors' irritability caused by long waiting
7. Interactive information kiosk can self-check service, thus saving time

Information playback

1. The attending doctor can be selected from the digital photo wall according to the situation
2. Employee duty display
3. Information display enables employees to understand ongoing projects and procedures
4. Reduce printing posters, leaflets, and labor costs

Recommended Products:

- | | |
|-----------------|---------------------------------|
| 1. SD-DWD | LCD VIDEO WALL |
| 2. SD208 | Wall-mounted display |
| 3. SD108 | Interactive touch whiteboard |
| 4. SD210-TK-DS | Interactive information kiosk |
| 5. SD209-FS-DS | Floor stand kiosk |
| 6. SD309 | Outdoor information Kiosk |
| 7. SD410-DMB-DS | Digital menu boards |
| 8. SDHSD | Hand sanitizer dispenser |
| 9. SD509 | Temperature testing pass device |



The digital signage display allows passengers to fully understand the situation. Provide dynamic flight arrival and departure information, including delays and cancellations.

Help passengers navigate the airport/train station/bus terminal. The digital display reduces confusion and simplifies the travel process for everyone at the airport. Transportation digital signage also helps to create a simpler way for passengers to quickly locate their boarding location and time of arrival or departure even in the busiest transportation centers.

Amazing advertising potential, advertising for any business in the transportation center will be very effective. Nonetheless, companies in the tourism and entertainment-related industries will get the most benefits in this area.

Entertainment makes waiting more enjoyable. Entertainment is a good way to reduce the perceived waiting time. This is a blessing thing in the transportation center.

Benefits

1. Branding and Organization Visibility
2. Enhance the travel experience
3. Engage passengers with news, weather, or interesting programming
4. Deliver real-time, location-based information
5. Improve operations by reducing the workload of employees
6. Help to keep passengers safe
7. Provide a travel guide through interactive wayfinding kiosks

Recommended Products:

- | | |
|----------------|---------------------------------|
| 1. SD-DWD | LCD VIDEO WALL |
| 2. SD210-TK-DS | Interactive information kiosk |
| 3. SD209-FS-DS | Floor stand kiosk |
| 4. SD309 | Outdoor information Kiosk |
| 5. SDHSD | Hand sanitizer dispenser |
| 6. SD509 | Temperature testing pass device |



Like any other industry, education institutions are no more away from utilizing the potential of new technological advancements. It becomes necessary for Schools, Colleges, and Universities to stay updated and implement these trends to enhance hospitality in their premises. Digital Signages were introduced as a boon in the hospitality industry, enriching the services and making it easier for organizations to deliver the best experience to their guests, clients, customers, etc. Thence, it has also widened the educational industry's scope to improve its services by increasing engagement, enhancing infrastructure, and building a strong reputation with students, teachers, guests, etc.

Benefits

1. Schools can publish important information on the advertising machine at any time so that every student can read the announcement information in time
2. Publish news, current affairs, and other information so that students can understand national news and current affairs while being educated.
3. By touching, smartpen writing can effectively reduce the inhalation of dust by teachers and students
4. Announce class collective information, let students consciously participate in-class group activities, and cultivate the spirit of collective unity
5. Strengthen the school spirit, let students participate in related entertainment activities, reading activities and sports activities, etc.

Recommended Products:

- | | |
|-----------------|--|
| 1. SD-DWD | LCD VIDEO WALL |
| 2. SD210-TK-DS | Interactive information kiosk |
| 3. SD209-FS-DS | Floor stand kiosk |
| 4. SD309 | Outdoor information Kiosk |
| 5. SD108 | Interactive education touch whiteboard |
| 5. SD410-DMB-DS | Digital menu boards |
| 6. SDHSD | Hand sanitizer dispenser |
| 7. SD509 | Temperature testing pass device |